

A red ink wash landscape painting serves as the background. It depicts steep, craggy mountains with vertical lines indicating cliffs. In the lower right, a cluster of traditional Chinese buildings with tiled roofs is nestled among trees. The overall style is traditional Chinese ink wash, rendered in a monochromatic red color.

**Public
Auction**

Eastern Auctions Ltd.

**People's Republic of China
The Max Goldman Estate**

**Gary J. Lyon
Licensed & Bonded Auctioneer**

**November 3
2017**

中国人民解放军
八一勋章



大軍也未能攻取。好。整个局势比以来越行越好。那时候都好。



整个形势比以往任何
时候都好。



Eastern Auctions Ltd.

P.O. Box 250, Bathurst, New Brunswick, E2A 3Z2, Canada

Tel: 1 (506) 548-8986 • Fax: 1 (506) 546-6627

Toll Free Tel: 1 (800) 667-8267 • Fax: 1 (888) 867-8267

E-Mail: easternauctions@nb.aibn.com

Web Site: www.easternauctions.com

PUBLIC AUCTION BID SHEET

Sale Date: November 3, 2017

Please buy the following lots for me at prices not exceeding those shown. I have read the conditions of sale at the end of the catalogue and understand the 15% buyer's premium.

Signature: _____

Customer #: _____

Name: _____

Address: _____ City: _____

Province/State: _____ Postal/Zip Code: _____

Country: _____

Telephone: _____ Fax: _____

E-Mail: _____

Credit Card Payment

☐ Please charge my purchases to my credit card and
I agree to pay a surcharge of 3.5% of the hammer amount.



Card #: _____ Exp Date: _____

Cardholder's Name (as it appears on card): _____

Billing Address if different from address printed above:

Signature: _____

References (First time bidders only): _____

☐ Please tick this box if you
are bidding in US Dollars:

*If necessary to secure a lot,
you may raise my bids by:*

10% ☐ 20% ☐

Bidding is conducted in the following increments:
(Uneven bids will be rounded downwards)

<i>\$10 - \$50..... \$2.00</i>	<i>\$800 - \$1,500..... \$50.00</i>	<i>\$15,000 - \$30,000..... \$1,000.00</i>
<i>\$55 - \$130..... \$5.00</i>	<i>\$1,600 - \$3,000..... \$100.00</i>	<i>\$30,000 - \$75,000.... \$2,500.00</i>
<i>\$140 - \$300..... \$10.00</i>	<i>\$3,250 - \$7,500..... \$250.00</i>	<i>\$75,000 - OVER..... \$5,000.00</i>
<i>\$325 - \$750..... \$25.00</i>	<i>\$8,000 - \$15,000..... \$500.00</i>	

*We are not responsible for bidder errors.
Please check bids and print clearly.*

[illegible]

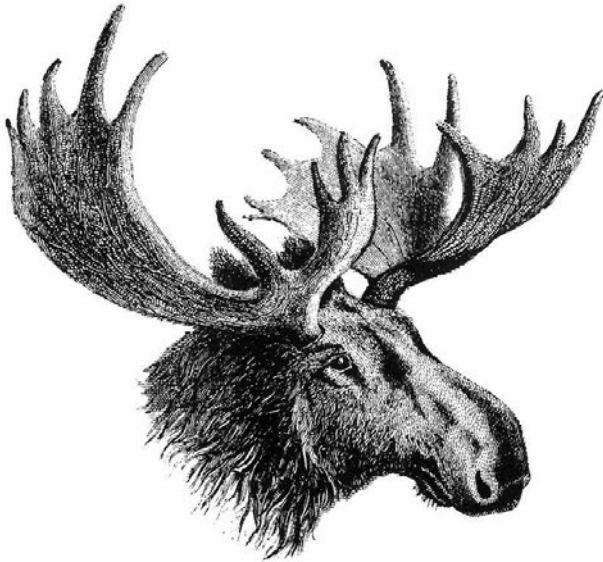
Bid early to avoid disappointment
View this sale on our Web Site: www.easternauctions.com

View this sale on our Web Site: www.easternauctions.com

You may mail, fax, e-mail or phone in your bids. Phone bids must be confirmed in writing. Mailing your bids less than two weeks prior to the sale is not recommended.

Eastern Auctions Ltd.

PUBLIC AUCTION



**People's Republic of China
The Max Goldman Estate**

**November 3, 2017
Halifax, Nova Scotia**

Eastern Auctions Ltd.

P.O. Box 250, Bathurst, New Brunswick, E2A 3Z2, Canada

Tel: 1 (506) 548-8986 • Fax: 1 (506) 546-6627

E-mail: easternauctions@nb.aibn.com

Web Site: www.easternauctions.com

Copyright © 2017 – All Rights Reserved

AUCTION INFORMATION

For assistance and further information
please contact:

SPECIALISTS IN STAMPS:

Gary Lyon
Yohann Tanguay

WEB SITE:

Luc Doucet

**CONSIGNOR SETTLEMENTS/
ACCOUNTS RECEIVABLE:**

Cindy Rogers

**MAILING LISTS AND
SHIPPING:**

Catherine Gallagher

CATALOGUE EDITORS:

Gary Lyon
Luc Doucet
Yohann Tanguay

VENUE

The Lord Nelson Hotel & Suites

1515 South Park Street
Halifax, Nova Scotia
B3J 2L2 Canada
Tel: 1 (902) 423-6331

Toll Free Tel: 1 (800) 565-2020

For Room Reservations Only

TERMS OF SALE AND AUCTION AGENTS
ARE LISTED AT THE BACK OF THE CATALOGUE.

Viewing Session *(Britannia Suite - Third floor)*

Thursday November 2, 2017 – 9:00am to 7:00pm AST

Auction Session *(Victoria Suite - Third floor)*

Friday November 3, 2017 – 9:00am AST (8:00pm CST, HKT) – (Lot 1 – 124)

Our father Max Goldman did not travel extensively. He always said he didn't need to because stamps could transport him anywhere around the globe. When he did travel however, no trip was complete without a visit to the city's main post office, or even better to a stamp fair if he could find one. He took pleasure in every aspect of philately and this was obvious in his massive collection.

A collector since the age of seven, our father came from a poor family. When his father (our grandfather) first discovered that he was collecting stamps, he thought it was a waste of time and money. He even hid the stamps on one occasion, telling Max he had thrown them out. But our father cried and of course the stamps were returned to him. Like many collectors, Max kept those first purchases all his life.



Our father loved to talk about his rarities and was always delighted to share his knowledge of stamps and geography with us. Most items were purchased directly from the country of origin. For many years stamps and first day covers arrived at our house regularly from all over the world. In 1961 he became interested in the People's Republic of China and began dealing with their new issue service.

The passion for collecting remained throughout his life. After he passed away we found albums stacked from floor to ceiling in every corner of the house. He collected dozens of countries; the more exotic ones were always his favourites. In addition to the PRC in this catalogue you will find many country collections in the worldwide section of the general catalogue.

We hope that this unusual opportunity will be well received by collectors. This will be the first time that these stamps have been sold since being purchased as new issues. As Max's children, together with the team at Eastern Auctions, we are delighted to present this auction.

Lynda and Richard Goldman



People's Republic of China
The Max Goldman Estate

Friday November 3, 2017 (Lot 1-124)
Auction begins at 9:00am (AST) - 8:00pm (CST, HKT)



- 1

★

269-270, 345-346, 360-361, 1955 8f & 20f Friedrich Engels Set along with 1958 8f & 22f Karl Marx set and 1958 4f & 8f Communist Manifesto set, all in lightly folded blocks of four, un gummed as issued, fresh and VF (Yang C131-C132, C163-C164, C173-C174; Gibbons 1684-1685, 1750-1751, 1765-1766)

604.00
- 2

★

290-294, 1956-1957 4f-8f Views of Imperial Peking Set of five corner margin blocks of eight, un gummed as issued; 4f (5-2), (5-4) and (5-5) from upper left with plate inscriptions in left margin. Each block has staple mark confined to margin only as they were originally stapled together by the new issue service, VF (Yang S104-S108; Gibbons 1691-1695)

(Illustrated on Page 5) **360.00**



X2



X3



- 3 ★ **441-444, 1959 4f-20f Anniversary of People's Republic of China (2nd Series)** Matching set of four lower left corner blocks of eight, lightly folded and with staple mark at edge of left sheet margin (originally stapled together by new issue service), with fresh colours, ungummed as issued, VF (Yang C218-C221; Gibbons 1846-1849) *(Illustrated on Page 5)* **564.00**
- 4 ★ **453-455, 1959 8f-20f Anniversary of People's Republic of China (4th series)** Set of three in blocks of six with sheet margin on one side, ungummed as issued, VF and fresh (Yang C230-C232; Gibbons 1858-1860) *(Illustrated on Website)* **279.00**



- 5 ★ **456, 1959 20f Anniversary of People's Republic of China (5th Series)** Left margin block of eight, ungummed as issued; lower pair somewhat faulty, others in pristine condition, VF (Yang C233; Gibbons 1861) **1,920.00**
- 6 ★ **502-503, 1960 8f & 10f Russian Space Flights** Matching pair of right margin imprint blocks of ten, marginal staple marks away from the imprint, fresh and F-VF NH (Yang S194-S195; Gibbons 1907-1908) *(Illustrated on Website)* **240.00**



- 7 ★ **506-517, 1960 4f-8f Goldfish** An impressive complete set of twelve imprint blocks of six, except 8f (12-9) a right margin imprint block of six additionally showing the control number, the other eleven blocks are upper right corner marginal with imprint in lower right margin and showing sheet number at top (12-7 has no sheet number). Minor crease in corner margin of 8f (12-5) block; the odd gum bend and all with somewhat dried or light uneven gum yellowing, otherwise fresh and F-VF NH (Yang S182-S193; Gibbons 1911-1922) **3,510.00**
- 8 ★ **518-522, 1960 8f Pig Breeding** Set of five folded blocks of six with imprint from either upper left or lower right corner margin, minor crease in margin of (5-1) and (5-5) blocks; somewhat dried or light uneven gum yellowing, otherwise fresh and F-VF NH (Yang S196-S200; Gibbons 1923-1927) *(Illustrated on Page 8)* **1,425.00**
- 9 ★ **540-541, 1960 8f & 10f Friedrich Engels** Folded set of two lower right corner blocks of eight (8f) and six (10f, imprint at foot), with matching sheet "2 131" number, staple mark at right margin; 8f with corner gum bend on top right stamp, 10f with small blemish on top left stamp, otherwise with fresh colours and VF NH (Yang C269-C270; Gibbons 1945-1946) *(Illustrated on Page 8)* **660.00**



X8



X9



- 10 ★ 569-573, 1961 4f-30f 40th Anniversary of the Chinese Communist Party Set of five in folded blocks of eight from lower left corner margin with imprint; except 8f is a right margin block with imprint. The 20f and 30f blocks show as well a sheet number at lower left. All with evenly yellowed gum, fresh colours, VF NH (Yang C287-C291; Gibbons 1974-1978) **2,620.00**



X11



X12

- 11 ★ 586-587, 1961 8f & 10f Anniversary of Mongolian People's Republic Mint set of two with margin on one side; 8f shows portion of imprinted date, VF NH (Yang C292-C293; Gibbons 1979-1980) **280.00**
- 12 ★ 586-587, 1961 8f & 10f Anniversary of Mongolian People's Republic Set of two, VF NH (Yang C292-C293; Gibbons 1979-1980) **280.00**



- 13 ★ **588a, 589, 1961 8f & 10f Military Museum** Set of two corner blocks of ten with imprint; 8f showing inscription series "229" (instead of "228") on all ten stamps from lower left corner of the sheet, staple mark at foot, overall disturbed / gum yellowing; 10f from upper right corner and additionally shows imprinted "61 VIII 3" date at right and sheet number at top, staple mark beside sheet number; natural gum inclusion on one stamp and overall light uneven gum yellowing to otherwise full original gum, F-VF NH (Yang S228a, S229; Gibbons 1993 variety, 1994) **2,350.00**





- 14 ★ **590-591, 1961 8f & 10f 50th Anniversary of the 1911 Revolution** Set of two folded corner margin imprint blocks of eight, staple mark confined to short side margin well away from the imprint, light uneven gum yellowing, otherwise F-VF NH (Yang C294-C295; Gibbons 1995-1996) **960.00**



- 15 ★ **610-611, 1962 4f & 8f Poet Tu Fu** Set of two folded blocks; 4f lower right corner block of nine with imprint, NH; 8f lower right corner block of eight with imprint, natural paper inclusion on one stamp and overall gum disturbance, fresh colours, F-VF (Yang C305-C306; Gibbons 2027-2028) **1,100.00**
- 16 ★ **612-614, 1962 8f-20f Sacred Cranes** Set of three in blocks of four with sheet margin on one or two sides; 8f and 10f with evenly dulled gum, latter with trace of surface adherence on top left stamp and imprint in bottom margin; 20f with faint gum disturbance on one stamp, otherwise VF NH (Yang S243-S245; Gibbons 2029-2031) *(Illustrated on Website)* **430.00**



STAGE ART OF MEI LAN-FANG

We are pleased to offer a remarkable hoard of this iconic series, including first day covers and no less than sixteen miniature sheets. Scans of the reverse of these can be viewed on our website. This spectacular and unparalleled display is one of the highlights of the sale.



- 17
- ★
- 620-627, 1962 4f-50f Stage Art of Mei Lan-fang** A remarkable set of corner margin blocks of four, except 20f a lower margin imprint block. Some peripheral flaws in sheet margin of 10f, 20f and 30f well away from the completely sound stamps with fresh colours; the 4f, 8f (8-3), 20f and 50f (with sheet number) blocks have somewhat flat or disturbed original gum, others with pristine original gum. Seldom encountered in blocks, VF NH (Yang C307-C314; Gibbons 2037-2044)

6,820.00

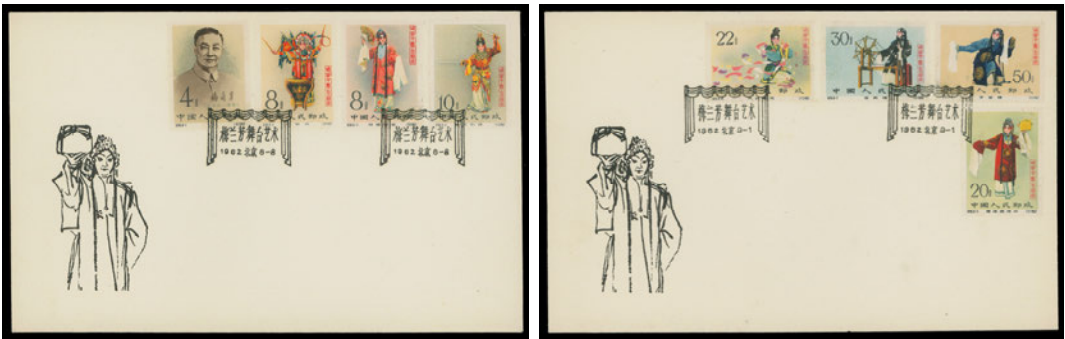
Please note our auctions are conducted in Canadian dollars. We accept bids in the currency of your choice; these will be converted into Canadian funds.



- 18 ★ 620-627, 1962 4f-50f Stage Art of Mei Lan-fang An appealing set of eight imprint pairs, except 20f is a right sheet margin vertical pair without imprint. The location of the imprint is at top or bottom on vertical format stamps and at left or right on horizontal. Overall to faint gum disturbance on 4f, 8f (8-3), 30f (good gum on top stamp with imprint) and 50f (lower stamp with bend; shows as well a light imprinted "62 VIII 24" date); 10f and 30f have light margin wrinkles well clear of the imprint margin. Apart from flaws mentioned above, stamps are fresh and VF NH (Yang C307-C314; Gibbons 2037-2044) **3,410.00**



- 19 ★ 620-627, 1962 4f-50f Stage Art of Mei Lan-fang Complete set of eight, well centered with brilliant fresh colours; overall to faint gum disturbance on 4f, 8f (8-3) and 50f (light wrinkle along bottom perfs), otherwise VF NH (Yang C307-C314; Gibbons 2037-2044) **1,705.00**



- 20 ☒ 620-627, 1962 4f-50f Stage Art of Mei Lan-fang Complete set of eight perforated, on two cacheted and unaddressed FDCs, cancelled by first day cachet cancels; in choice condition, VF (Yang C307-C314; Gibbons 2037-2044) **Est. 500.00+**



AN EXTRAORDINARY SET OF IMPERFORATE IMPRINT BLOCKS OF EIGHTEEN AMONG THE LARGEST EXISTING MULTIPLES



- 21 ★ **620-627 imperforate, 1962 4f-50f Stage Art of Mei Lan-fang** An outstanding complete set of imperforate corner blocks of eighteen stamps, all with imprint, light to faint uneven gum yellowing, the result of having been stored in a stockbook for decades. **117,000.00**

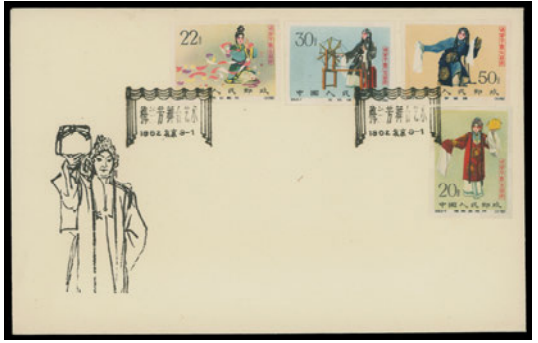
Various corner margin positions as follows:

- 4f Mei Lan-fang, lower right with imprint at foot and sheet margin at left; one stamp has trivial bend and one with tiny gum inclusion; full original gum, never hinged.
- 8f (8-2) Drum, lower left with imprint at foot, faint gum wrinkle along top row, full original gum, never hinged;
- 8f (8-3) Fan, lower left corner with imprint at foot, small paper inclusion on fifth stamp from second row, full original gum, never hinged;
- 10f Swords, lower left with imprint at foot, minor gum bend mostly confined to sheet margin below bottom left pair, full original gum, never hinged;
- 20f Bag, lower left with imprint at foot, light trace of gum disturbance to otherwise full original gum, never hinged;
- 22f Ribbons, upper left with imprint at left, irregular shape margin at bottom left, light overall disturbance to original gum and faint natural wrinkling on three stamps;
- 30f Loom, lower right with imprint at right, along with control number, a few natural inclusions and a light gum bend at bottom right, full original gum, never hinged;
- 50f Long Sleeves, upper left with imprint at left, overall disturbance to original gum, faint adherence.

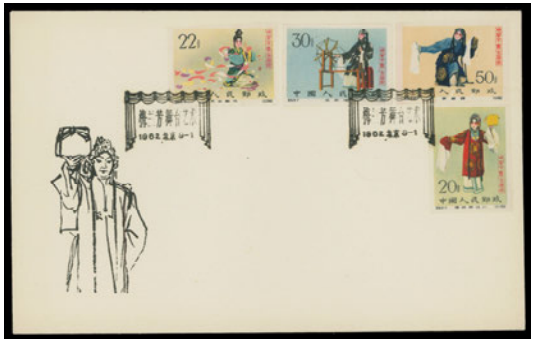
A magnificent and very fine set of these sought-after imperforates, rarely seen in such large multiples. In fact, the largest multiples we were able to locate during research are imperforate imprint blocks of ten (two values were in blocks of eight and a pair). One of the highlights of the Goldman Estate. (Yang C307i-C314i; Gibbons 2037-2044 imperforate)

北京邮票厂印制

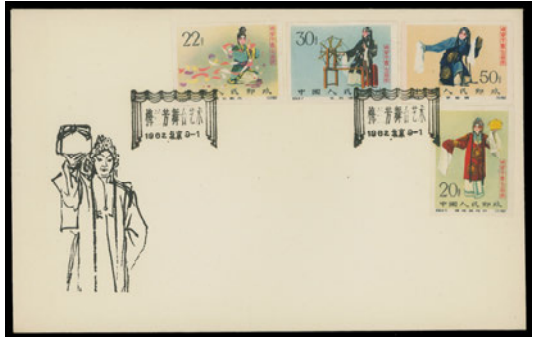




- 22 ☒ **620-627 imperforate, 1962 4f-50f Stage Art of Mei Lan-fang** Imperforate set of eight on two cacheted, unaddressed FDCs; tied by cacheted first day cancels, VF (Yang C307i-C314i; Gibbons 2037-2044 imperf) **Est. 750.00+**



- 23 ☒ **620-627 imperforate, 1962 4f-50f Stage Art of Mei Lan-fang** Imperforate set of eight on two cacheted, unaddressed first day covers; slight corner bend on 4f stamp, tied by cacheted first day cancels, VF (Yang C307i-C314i; Gibbons 2037-2044 imperf) **Est. 750.00+**



- 24 ☒ **620-627 imperforate, 1962 4f-50f Stage Art of Mei Lan-fang** Imperforate set of eight on two cacheted, unaddressed FDCs; first with lower denomination has small wrinkle and slight corner bend on 4f stamp, tied by cacheted first day cancels, VF (Yang C307i-C314i; Gibbons 2037-2044 imperf) **Est. 750.00+**

- 25 ☒ **620-627 imperforate, 1962 4f-50f Stage Art of Mei Lan-fang** Imperforate set of eight on two cacheted, unaddressed FDCs; first has trivial gum staining just outside of 10f stamp, second has natural inclusion spot at left, tied by cacheted first day cancels, VF (Yang C307i-C314i; Gibbons 2037-2044 imperf) *(Illustrated on Website)* **Est. 750.00+**

- 26 ☒ **620-627 imperforate, 1962 4f-50f Stage Art of Mei Lan-fang** Imperforate set of eight on two cacheted, unaddressed FDCs; light ageing visible on both 8f stamps and less so on 20f and 50f, tied by cacheted first day cancels, Fine (Yang C307i-C314i; Gibbons 2037-2044 imperf) *(Illustrated on Website)* **Est. 500.00**



27



28

- 27 ★ **628, 1962 \$3 Stage Art of Mei Lan-fang** Miniature sheet with bright fresh colours on white paper, couple minute gum inclusions entirely natural, light uneven yellowing to full original gum, choice, VF NH (Yang C94M; Gibbons MS2044a) **15,000.00**
- 28 ★ **628, 1962 \$3 Stage Art of Mei Lan-fang** Miniature sheet with post office fresh colours on white paper, minute gum wrinkle at top, light uneven yellowing to otherwise full original gum; a beautiful sheet, VF NH (Yang C94M; Gibbons MS2044a) **15,000.00**



29



30

- 29 ★ **628, 1962 \$3 Stage Art of Mei Lan-fang** Miniature sheet in pristine condition with brilliant fresh colours on white paper, light uneven yellowing to otherwise full original gum; a remarkably choice sheet, VF NH (Yang C94M; Gibbons MS2044a) **15,000.00**
- 30 ★ **628, 1962 \$3 Stage Art of Mei Lan-fang** Miniature sheet in an excellent state of preservation with brilliant fresh colours on white paper, slightly uneven yellowing to full original gum; a particularly choice example of this popular souvenir sheet, VF NH (Yang C94M; Gibbons MS2044a) **15,000.00**



31



32

- 31 ★ **628, 1962 \$3 Stage Art of Mei Lan-fang** Miniature sheet with bright colours on pristine white paper, minute gum inclusions entirely natural to this otherwise completely sound sheet, light uneven yellowing and faint disturbance to full original gum, VF NH (Yang C94M; Gibbons MS2044a) **15,000.00**
- 32 ★ **628, 1962 \$3 Stage Art of Mei Lan-fang** Miniature sheet with post office fresh colours on bright white paper, light uneven yellowing and faint disturbance to otherwise full original gum, VF NH (Yang C94M; Gibbons MS2044a) **15,000.00**



33



34

- 33 ★ **628, 1962 \$3 Stage Art of Mei Lan-fang** Miniature sheet with brilliant colours on fresh white paper, showing faint trace of disturbance and light uneven yellowing to otherwise full original gum, VF NH (Yang C94M; Gibbons MS2044a) **15,000.00**
- 34 ★ **628, 1962 \$3 Stage Art of Mei Lan-fang** Miniature sheet with post office fresh colours on bright white paper, faint disturbance and light uneven yellowing to otherwise full original gum, VF NH (Yang C94M; Gibbons MS2044a) **15,000.00**



35



36

- 35 ★ **628, 1962 \$3 Stage Art of Mei Lan-fang** Miniature sheet with post office fresh colours on pristine white paper, tiny natural gum inclusions and small faint wrinkle, full original gum showing slight uneven yellowing, nevertheless a nice example of this sought-after souvenir sheet, VF NH (Yang C94M; Gibbons MS2044a) **15,000.00**
- 36 ★ **628, 1962 \$3 Stage Art of Mei Lan-fang** Miniature sheet with brilliant colours on fresh white paper, faint vertical gum wrinkle only visible from the back with light uneven yellowing to otherwise full original gum, VF NH (Yang C94M; Gibbons MS2044a) **15,000.00**



- 37 ★ **628, 1962 \$3 Stage Art of Mei** An extraordinary lot of six miniature sheets in well-above average condition for this notoriously difficult sheet; light uneven yellowing resulting from storage in a stockbook for the past decades. All six display brilliant colours on fresh white paper, three are completely sound (one has natural gum inclusions), the other three with faint gum wrinkle(s) visible from the back only. Four sheets with light disturbance to otherwise full original gum, never hinged. An imposing group of this keenly sought-after sheet, VF NH (Yang C94M; Gibbons MS2044a) **90,000.00**



- 38 ★ **629-634, 1962 4f-50f Chinese Folk Dances** Complete set of imprint blocks of six from top or bottom of the sheet (8f in a vertical block, folded horizontally between second and third rows), plus another set of six in blocks of four with sheet margin on one or two sides (10f has imprint). Couple minor wrinkles on 20f, ungummed as issued, VF (Yang C246-C251; Gibbons 2045-2050)
(Illustrated on Website) **242.50**



X39



40

- 39 ★ **635-636, 1962 45th Anniversary of the Russian Revolution** Set of two folded multiples with light even gum yellowing; 8f a top imprint block of four with imprinted date, light gum disturbance more evident on lower pair; 20f a top left corner vertical strip of four with imprint, small area of gum disturbance in margin, leaving stamps F-VF NH (Yang C315-C316; Gibbons 2051-2052) **940.00**
- 40 ★ **636, 1962 20f 45th Anniversary of the Russian Revolution** Folded block of eight from top right corner, with imprint, sheet number and imprinted date, light even gum yellowing and slight trace of surface adherence on one stamp, otherwise F-VF NH (Yang C316; Gibbons 2052) **1,280.00**
- 41 ★ **655-660, 1963 4f-10f 4th Anniversary of Cuban Revolution** The set of six in folded blocks of nine with sheet margin on one or two sides, except for 4f (6-2) all other values have imprint; 4f (6-1) and (6-2) with couple natural gum inclusions, 8f (6-3) crowd in Havana block with gum somewhat dulled, a beautiful set of imprint blocks in an excellent state of preservation, bright fresh colours, F-VF NH (Yang C319-C324; Gibbons 2063-2068)
(Illustrated on Page 21) **4,725.00**
- 42 ★ **655-660, 1963 4f-10f 4th Anniversary of Cuban Revolution** Fresh mint set of six; 4f (6-2) with imprint in right margin, 10f (6-6) with negligible small corner bend, F-VF NH (Yang C319-C324; Gibbons 2063-2068)
(Illustrated on Page 21) **525.00**
- 43 ★ **657, 1963 8f Crowd in Peking** Right margin imprint block, lightly folded vertically between pairs, pristine fresh, VF NH (Yang C321; Gibbons 2066)
(Illustrated on Page 21) **360.00**



X41



-X42-



43



44 ★ **661-680, 1963 4f-50f Butterflies** A remarkable complete set of twenty in corner margin imprint blocks of twelve, fresh and ungummed as issued; eight have negligible bends / wrinkling on one corner stamp well away from the key top or lower margin imprint blocks of eight. Additionally, sheet numbers are shown on four 8f blocks. An impressive set rarely offered in such large mint imprint blocks - in fact we were unable to locate anything larger than imprint blocks of four during our research, VF (Yang S285-S304; Gibbons 2069-2088) **4,350.00**



- 45 ★ **684-695 imperforate, 1963 4f-20f Children's Day** The complete set in imperforate blocks of twelve, ungummed as issued; 4f (12-1) in an upper right corner block, folded between second and third rows, all other blocks are in matching upper left imprint blocks of twelve, most have bends or wrinkles mainly confined to sheet margins away from the imprint or on lower right stamp, the latter being on 4f (12-2), 8f (12-3), 8f (12-6) and 20f (12-12). Faint diagonal bends or pre-printing creases on 4f (12-3) and 8f (12-7). Despite these minor imperfections this set is, no doubt, very seldom encountered in such large imprint blocks, F-VF (Yang S267i-S278i; Gibbons 2092-2103 imperf) **3,600.00**
- 46 ★ **684-695 imperforate, 1963 4f-20f Children's Day** The complete set of twelve imperforate pairs, ungummed as issued; eight with sheet margin on one side, light bend on 8f (12-7) and 20f (12-11), small scissor cut between stamps at foot on 20f (12-12) pair, a fresh set with large margins, VF (Yang S267i-S278i; Gibbons 2092-2103 imperf) *(Illustrated on Page 24)* **600.00**
- 47 ★ **708-710, 1963 8f-10f Giant Panda** The set of three in blocks of eight; 8f (3-1) with imprint in lower margin shows slight trace of foxing visible from front, NH; 8f (3-2) with dried OG; and 10f (3-3) with imprinted date in left sheet margin, NH, VF (Yang S330-S332; Gibbons 2116-2118) *(Illustrated on Website)* **1,020.00**



X46



X49



- 48 ★ **708-710 imperforate, 1963 8f-10f Giant Panda Imperforate set of three; 8f (3-1) upper left imprint block of twelve with sheet number and colour plate, vertical fold in margin between first and second columns, with full original gum NH; 8f (3-2) upper left imprint block of nine with sheet number and colour plate at left, dried original gum; 10f a block of six, light gum disturbance and lower pair faulty, plus a right margin imprint pair, uneven gum yellowing, NH, F-VF; Scott cat. value is for six sets only (Yang S330i-S332i; Gibbons 2116-2118 imperf) 1,800.00**
- 49 ★ **708-710 imperforate, 1963 8f-10f Giant Panda Imperforate set of three singles with sheet margin on one side, fresh and VF NH (Yang S330i-S332i; Gibbons 2116-2118 imperf) 300.00**



50 ★ 711-712, 1963 8f World Table Tennis Championship Matching pair of upper right corner imprint blocks of eight, each folded horizontally between rows, slight traces of black offset on reverse as customary for these, fresh and F-VF NH (Yang C329-C330; Gibbons 2119-2120) 440.00



51 ★ 713-715, 1963 8f, 10f & 22f Monkeys Set of three blocks of four with fresh colours, 10f with lower left corner margin showing colour plate, others with margin at foot, VF NH (Yang S333-S335; Gibbons 2121-2123) 274.00



52 ★ 713-715 imperforate, 1963 8f, 10f & 22f Monkeys Matching set of three imperforate blocks of fifteen, each with different imprinted date at top left; 10f has light gum wrinkle on one stamp and a natural gum inclusion spot; 22f with light gum bend on two stamps in bottom row. Otherwise in an excellent state of preservation for such large multiples, VF NH (Yang S333i-S335i; Gibbons 2121-2123 imperf) 4,500.00



- 53 ★ 716-731, 1963 4f-50f **Hwangshan Landscapes** An impressive complete set in corner blocks of twelve with imprint; control numbers and sheet numbers are additionally shown on nine values. All folded once, customary traces of black offset on gum from the engraving. Most blocks with some degree of creasing or wrinkling affecting one or two pairs at one or both ends, 10f (16-9) and (16-10) have perf separations, nevertheless each has the key imprint block of eight in an excellent state of preservation with fresh colours and full "white" original gum, F-VF NH (Yang S305-S320; Gibbons 2124-2139)

11,160.00



- 54 ★ **716-731, 1963 4f-50f Hwangshan Landscapes** A remarkable complete set of blocks of ten - vertical format stamps in horizontal blocks (5x2) and horizontal format stamps in vertical blocks (2x5). The odd light fold and customary traces of printing offset on gum from engraving and completely natural on these. The 4f (16-1) with a trivial corner bend on one stamp, 4f (16-3) shows imprint in right sheet margin, 8f (16-5) tiny moisture spot on one stamp, 8f (16-8) minor gum wrinkle on one stamp, 50f (16-16) light bend on two stamps. All blocks are exceptionally fresh, most being well centered and all have fresh and full "white" original gum, F-VF NH (Yang S305-S320; Gibbons 2124-2139) **9,300.00**

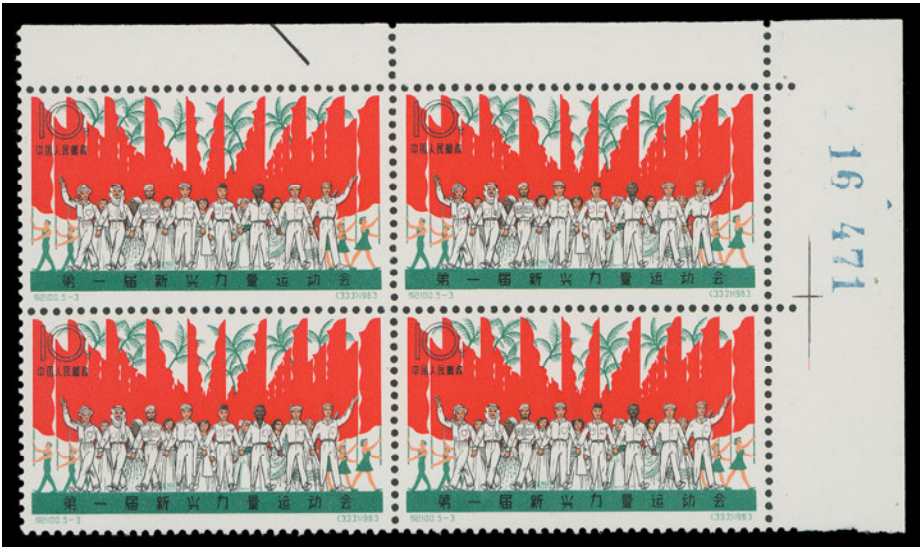


X55



X56

- 55 ★ **716-731, 1963 4f-50f Hwangshan Landscapes** Complete set with fresh colours; minute gum wrinkle on 20f and 22f, still a beautiful set, F-VF NH (Yang S305-S320; Gibbons 2124-2139) **930.00**
- 56 ★ **716-731, 1963 4f-50f Hwangshan Landscapes** Complete set with fresh colours, 4f (16-1) being a top left corner single with sheet number; various degrees of wrinkling in one corner of 8f (16-6), (16-8) and 10f (16-11), F-VF NH (Yang S305-S320; Gibbons 2124-2139) **930.00**



- 57 ★ 732-736, 1963 8f & 10f Athletic Games Lot of four sets, 8f denominations are in strips of four except 8f (5-4) strip of three and single, the 10f is an upper right corner block folded vertically with sheet number, fresh and VF NH (Yang C331-C333; Gibbons 2140-2144) **528.00**
- 58 ★ 748-749, 1964 8f 5th Anniversary of the Liberation of Cuba Pair of lower right imprint blocks of twelve with matching "04251" sheet number; both folded twice, 8f (2-2) faint trace of toning on four stamps. An appealing duo, F-VF NH (Yang C338-C339; Gibbons 2156-2157) *(Illustrated on Page 30)* **1,560.00**
- 59 ★ 748-749, 1964 8f 5th Anniversary of the Liberation of Cuba Matching pair of upper right imprint blocks of eight, both folded between third and fourth columns, choice, VF NH (Yang C338-C339; Gibbons 2156-2157) *(Illustrated on Page 30)* **1,040.00**



- 60 ★ 748-749, 1964 8f 5th Anniversary of the Liberation of Cuba Set of two blocks of four; 8f (2-1) has hint of toning visible from the front, F-VF NH (Yang C338-C339; Gibbons 2156-2157) **520.00**
- 61 ★ 758-759, 1964 8f Labour Day Set of two sheet margin blocks of twelve, folded once; 8f (2-2) with trivial gum bends on two stamps, fresh and VF NH (Yang C341-C342; Gibbons 2166-2167) *(Illustrated on Website)* **1,260.00**



-X58-



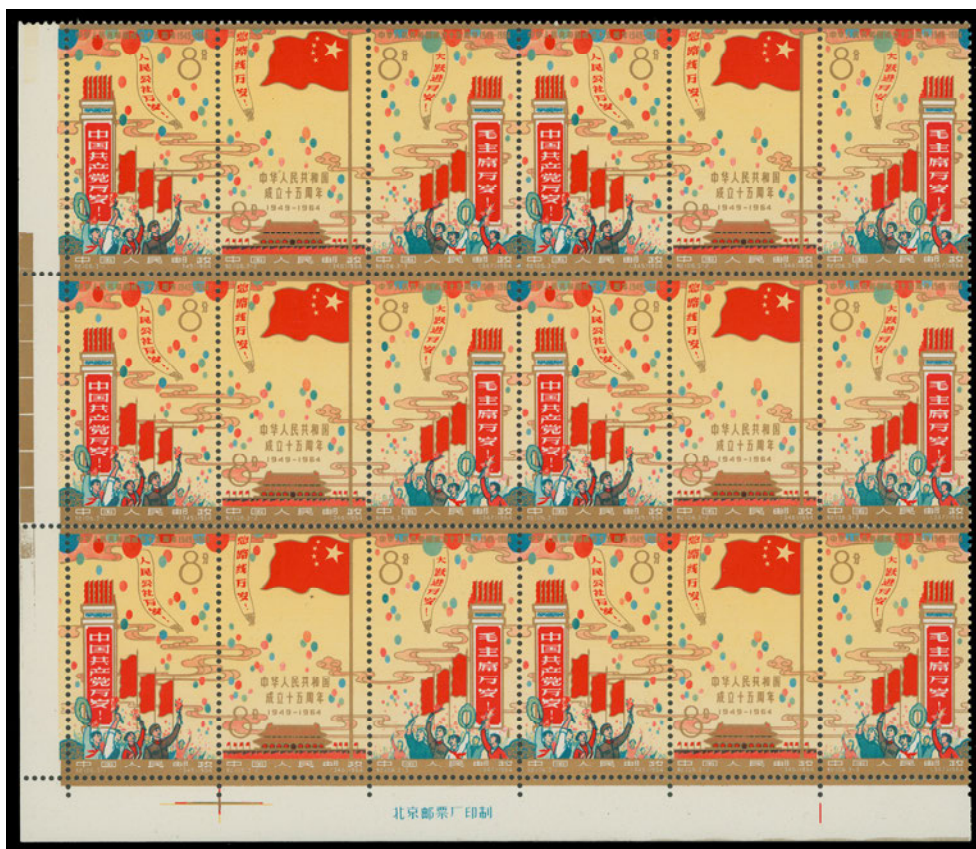
-X59-



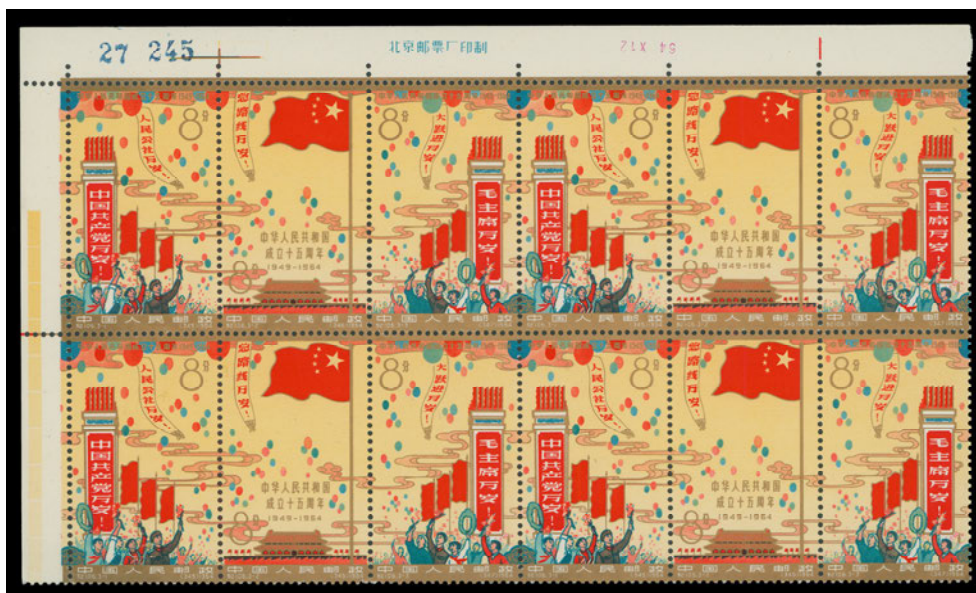
62 ★ 758-759, 1964 8f Labour Day The set of two in vertical imprint strips of three; 8f (2-1) from left sheet margin with imprinted date, trivial gum wrinkle on lower stamp; 8f (2-2) from top right corner margin with sheet number, top stamp with ink smudge on gum likely resulting from undried ink from another sheet during printing. An attractive duo, fresh and VF NH (Yang C341-C342; Gibbons 2166-2167) **315.00**



63 ★ 760-765, 1964 8f-52f Yenan, Shrine of the Chinese Revolution The set of six in blocks of eight with upper left corner margin with sheet number, except 8f (6-1) folded vertically from lower left corner; 8f (6-4) has one stamp with fingerprint on gum, 8f (6-5) has minor dents to paper on two stamps. All six blocks are fresh, VF NH (Yang S373-S378; Gibbons 2178-2183) **1,120.00**



- 64 ★ 798b, 1964 8f 15th Anniversary of the People's Republic Six se-tenant strips of three forming a lower left block of eighteen stamps, colour plate at left and imprint at foot; folded between second and third rows leaving all se-tenant strips unfolded. Small gum bend on upper right stamp, otherwise with untarnished gold and in choice condition, VF NH (Yang C344-C346; Gibbons 2213a) **1,650.00**



- 65 ★ 798b, 1964 8f 15th Anniversary of the People's Republic Upper left corner block of twelve containing four se-tenant strips of three, showing colour plate, sheet number, imprint and imprinted date in the margin; hint of tarnished gold on left side of first column, trivial gum wrinkle on bottom left stamp; all of the se-tenant strips are unfolded, VF NH (Yang C344-C346; Gibbons 2213a) **1,100.00**



66 ★ 799-803, 1964 4f-20f Oil Industry The set of five in folded strips of ten; the 4f and 20f with lower margin, both 8f and the 10f strips with right-side margin; there are sheet numbers on the 4f, 8f (5-2) and 10f strips. Trivial bend on one stamp or in the margin on 4f and both 8f strips; the 20f strip has minor perf separation between third and fourth columns and tiny blemish on one stamp, fresh and F-VF NH (Yang S383-S387; Gibbons 2216-2220) 4,400.00



- 67 ★ **799-803, 1964 4f-20f Oil Industry** Matching set of five upper right corner margin blocks of four; 4f has tiny natural gum inclusion on lower right stamp, 8f (5-3) one pulled perf on lower left stamp but shows colour plate in margin, 20f shows sheet number. Brilliant fresh blocks, VF NH (Yang S383-S387; Gibbons 2216-2220) **1,760.00**



- 68 ★ **799-803, 1964 4f-20f Oil Industry** The set of five in corner margin blocks of four; 4f and 20f are upper left blocks, 8f and 10f are lower right. The 8f (5-2) and 10f blocks have sheet number and 8f (5-3) shows the colour plate; one short perf on 20f block, all are pristine and fresh, VF NH (Yang S383-S387; Gibbons 2216-2220) **1,760.00**
- 69 ★ **804-805, 1964 8f & 10f Liberation of Albania** Matching set of two lower margin strips of ten; 8f has staple mark in right margin, 10f strip has small perf fault on upper right stamp; both strips are fresh and well centered, VF NH (Yang C348-C349; Gibbons 2221-2222) *(Illustrated on Website)* **750.00**
- 70 ★ **804-805, 1964 8f & 10f Liberation of Albania** Matching set of two imprint blocks of four, fresh and F-VF NH (Yang C348-C349; Gibbons 2221-2222) *(Illustrated on Website)* **300.00**



X71



X74



X72

- 71 ★ **806-809, 1964 4f-20f Hsinankiang Hydro-Electric Power Station** The set of four in folded strips of ten, all showing colour plates in the left (20f) or right side sheet margin; natural gum skips on lower pair of both 8f strips, fresh and F-VF NH (Yang S388-S391; Gibbons 2223-2226) **3,750.00**
- 72 ★ **806-809, 1964 4f-20f Hsinankiang Hydro-Electric Power Station** Matching set of upper left corner blocks of six, each lightly folded horizontally between first and second rows; first three values with sheet number, 20f with colour plate in left sheet margin; 4f (4-1) has diagonal crease on top left stamp and trivial gum disturbance on lower pair, fresh colours, VF NH (Yang C388-C391; Gibbons 2223-2226) **2,250.00**



- 73 ★ **806-809, 1964 4f-20f Hsinankiang Hydro-Electric Power Station** An appealing set of four, 4f and both 8f stamps with imprint in top margin; 8f (4-3) with minute natural inclusion. All with fresh colours and F-VF NH (Yang S388-S391; Gibbons 2223-2226) **375.00**
- 74 ★ **806-809, 1964 4f-20f Hsinankiang Hydro-Electric Power Station** Pristine fresh mint set of four, VF NH (Yang S388-S391; Gibbons 2223-2226) *(Illustrated on Page 35)* **375.00**



- 75 ★ **818-820, 1965 8f Tsunyi Conference** Set of three folded blocks of ten; 8f (3-1) and (3-3) from bottom of sheet with margin on three sides and imprint at both ends, one 8f (3-3) has tiny spot on gum; 8f (3-2) upper left corner margin with imprint and imprinted date, sheet number which was subsequently crossed out at left, marginal flaws from previous staple at left. Fresh colours, F-VF NH (Yang C350-C352; Gibbons 2235-2237) **2,900.00**



- 76 ★ **818-820, 1965 8f Tsunyi Conference** Set of three in blocks of eight; 8f (3-1) and 8f (3-2) blocks have dent to paper on one stamp, 8f (3-3) is a lower left corner block with imprint and imprinted date; staple mark in margin below lower right stamp, well away from the imprint. All with fresh colours, F-VF NH (Yang C350-C352; Gibbons 2235-2237) **2,320.00**
- 77 ★ **823, 1965 8f 95th Anniversary of Lenin's Birth** Upper right corner block of ten with imprint and control number, minute dent on bottom left stamp, otherwise in pristine condition, VF NH (Yang C355; Gibbons 2240) *(Illustrated on Page 38)* **250.00**
- 78 ★ **823, 1965 8f 95th Anniversary of Lenin's Birth** Lower margin imprint block of six, staple mark away from imprint, fresh VF NH (Yang C355; Gibbons 2240) *(Illustrated on Website)* **150.00**



77



X79



X80

- 79 ★ 828-832, 1965 8f Chinese Mountaineering Matching set of five upper left corner blocks of four, 8f (5-2) and (5-4) have sheet number; fresh colours, F-VF NH (Yang S400-S404; Gibbons 2245-2249) **300.00**
- 80 ★ 828-832, 1965 8f Chinese Mountaineering Matching set of five blocks of four with sheet margin at left, fresh VF NH (Yang S400-S404; Gibbons 2245-2249) **300.00**
- 81 ★ 833, 1965 8f Postal Ministers' Congress A right margin block of ten and an upper right corner block of eight, latter has staple mark in top margin only, both blocks are in pristine VF NH condition (Yang C360; Gibbons 2250) *(Illustrated on Website)* **405.00**



- 82 ★ **834-841, 1965 4f-52f Chiangkang Mountains Set** of eight folded blocks of ten from bottom of sheet, with margin on three sides except 8f (8-3) from top of sheet with sheet number; 8f (8-4) has couple small spots on gum, 8f (8-5) with natural gum inclusion on one stamp and couple short perfs, 52f with couple minute wrinkles. All with fresh colours, VF NH (Yang S418-S425; Gibbons 2251-2258)

2,750.00



- 83 ★ **842-849, 1965 8f People's Liberation Army** An impressive set of eight corner margin blocks of ten, all show the imprint, most with control number or imprinted date; staple mark on side margin where no imprint is present; 8f (8-1) small nick and adherence both entirely in the margin, 8f (8-2) trivial perf separation, 8f (8-8) with small surface thin on upper left stamp. Overall in excellent state of preservation with brilliant fresh colours, VF NH (Yang S426-S433; Gibbons 2259-2266)

3,200.00



- 84 ★ 859-862, 1965 8f 20th Anniversary of Victory over Japanese The set of four positional blocks of four; 8f (4-1) with imprint in lower margin, couple nibbed perfs at left, 8f (4-2) and 8f (4-4) from lower left corner with sheet number, 8f (4-3) from lower right corner with sheet number. Each block has staple mark near edge of the sheet margin, fresh, VF NH (Yang C366-C369; Gibbons 2276-2279) **670.00**



- 85 ★ 859-862, 1965 8f 20th Anniversary of Victory over Japanese Set in blocks of four; 8f (4-1) with imprint in lower margin, staple mark near edge of margin and minor corner crease at top left, others in pristine condition with sheet margin on one side. All stamps fresh and VF NH (Yang C366-C369; Gibbons 2276-2279) **670.00**



- 86 ★ **863-873, 1965 4f-43f Second National Games** An attractive set of eleven blocks of eight with imprint margin at top or at foot; large size 10f Ceremonies folded vertically along perfs ending in a few perfs separated at foot, 22f with couple faint bends on top pair, 30f with natural paper inclusion on one stamp. Each block has staple holes in margin only (set was originally stapled together by new issue service) well away from the imprint on six values - both 4f, 8f (11-3), 8f (11-5), 10f (11-7), 22f; near or into imprint area on other five. Minor imperfections aside all stamps are fresh and VF NH (Yang C370-C380; Gibbons 2280-2290) **3,080.00**



X87



89

- 87 ★ **886-890, 1965 8f Women in Industry** Matching set of five lightly folded blocks of eight from lower right corner; 8f (5-1) with sheet number, minor wrinkle on one stamp, 8f (5-2) with sheet number, trivial edge flaws to margin, two stamps with fingerprints on gum; 8f (5-3) with sheet number, natural streaky / gum skips; 8f (5-5) with sheet number, faint corner gum bend. Fresh and F-VF NH (Yang S405-S410; Gibbons 2291-2295) **1,100.00**
- 88 ★ **917-918, 1966 8f & 22f Afro-Asian Writer's Meeting** Set of two folded blocks of ten with sheet margin on three sides, 8f from top of sheet with sheet number 22f from bottom of sheet, fresh F-VF NH (Yang C387-C388; Gibbons 2322-2323) *(Illustrated on Website)* **300.00**
- 89 ★ **919, 1966 8f Dr. Sun Yat-sen** Lower right corner block of six, folded, with trivial flaws in the margin only, VF NH (Yang C389; Gibbons 2324) **510.00**
- 90 ★ **919, 1966 8f Dr. Sun Yat-sen** Upper right corner block of four, fresh VF NH (Yang C389; Gibbons 2324) *(Illustrated on Website)* **340.00**



- 91 ★ 920-923, 1966 8f Cultural Revolution Games Complete set of four folded blocks of ten; 8f (4-1) being an irregular block from upper left corner showing control number in left margin, couple minor bends in margin only; 8f (4-2) shows margin at top and bottom, former with control number; 8f (4-3) from top of sheet with margin on three sides, couple shorter perfs on lower right stamp; 8f (4-4) from top of sheet, small marginal tear above fourth stamp. All fresh colours and VF NH (Yang C390-C393; Gibbons 2325-2328) **2,700.00**



- 92 ★ 924-926, 1966 8f Lu Hsun Set of three folded strips of ten; 8f (3-1) from bottom of sheet with two imprints, minor bends in the margin only; 8f (3-2) from top of sheet with two imprints, also imprinted date and control number, perforations severed more than half way up between first and second stamps; 8f (3-3) from bottom of sheet with two imprints plus sheet number, control number and an imprinted date. All strips well centered stamps with fresh colours, VF NH (Yang C394-C396; Gibbons 2329-2331) **2,600.00**



93 ★ 927-929, 1967 8f Oilwell Firefighters Set of three folded strips of ten; 8f (3-1) from right side of sheet with number at foot, somewhat tarnished gold and two stamps with nibbed perfs, 8f (3-2) the complete right margin side of the sheet showing two imprints and 8f (3-3) from left side of sheet with sheet number at top left. F-VF NH (Yang C403-C405; Gibbons 2332-2334) 1,725.00



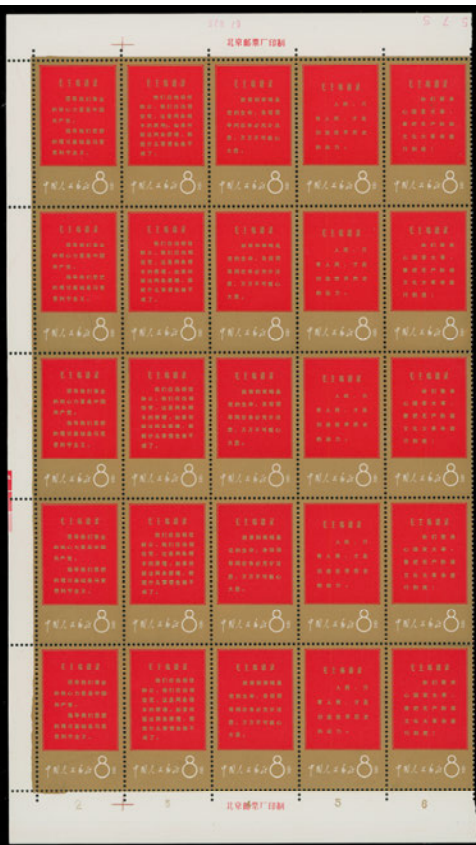
94 ★ 930-935, 1967 8f Liu Ying-chun Matching set of six left folded blocks of ten, each with sheet margin on three sides; 8f (6-1) with sheet number at upper left, has small tear and light bend in margin only. A beautiful set of blocks with fresh colours, VF NH (Yang C397-C402; Gibbons 2335-2340) 3,300.00



95 ★ 936-937, 1967 8f **Third Five-Year Plan** Matching pair of folded upper left corner blocks of six with imprint in different locations; 8f (2-2) with couple natural gum inclusions on one stamp, fresh, VF NH (Yang C385-C386; Gibbons 2341-2342) 1,020.00



96 ★ 936-937, 1967 8f Third Five-Year Plan Matching pair of upper right corner margin blocks of four with sheet number; 8f (2-2) with imprint at lower right. A nice duo with fresh colours, VF NH (Yang C385-C386; Gibbons 2341-2342) **680.00**



YANG "W" SERIES



97 ★ 938, 943a, 948a, 1967 8f Thoughts of Chairman Mao Tse-tung Complete set of eleven as follows:

Chairman Mao 8f stamp

Bottom of the sheet horizontal strip of ten, folded twice vertically, with imprint below sixth stamp and printed "1" number at lower right.

Red Frame and Gold

Left half sheet margin block of 25 folded horizontally in three places leaving the five se-tenant strips of five unfolded with imprint at top and at foot, along with imprinted "67 IV 17" date at top; corner creases affecting right side (left side in the margin only) of second and third se-tenant strips;

Right half sheet margin block of 25 folded horizontally in three places leaving the five se-tenant strips of five unfolded with imprint at top and at foot, plus sheet number at bottom right; corner creases touching left side (right side margins have flaws clear of the stamps) of three strips;

Gold Frame and Red

Left half sheet margin block of 25 with uniformly bright gold coloured frame, folded horizontally in three places leaving the five se-tenant strips of five unfolded with imprint at top and at foot, along with imprinted "67 III 25" date at top; corner creases affecting right side (left side nearly confined the margin only) of second and third se-tenant strips;

Right half sheet margin block of 25, top left stamp with somewhat tarnished gold, remaining stamps with uniformly bright gold coloured frame, folded horizontally in three places leaving the five se-tenant strips of five unfolded with imprint at top and at foot; marginal fault at lower right below sheet number, corner creases affecting left side (right side nearly confined the margin only) of third and fourth se-tenant strips;

A remarkable assembly of these elusive se-tenant strips; despite the imperfections mentioned above these multiples are in exceptional condition considering their large size, with full original gum, VF NH (Yang W1-W11; Gibbons 2343, 2344a, 2349a)

35,750.00

Please note our auctions are conducted in Canadian dollars. We accept bids in the currency of your choice; these will be converted into Canadian funds.





98 ★ 949-956, 1967 4f-10f Our Great Teacher An impressive set of eight folded blocks of six, consisting of the following:

- 4f Text praising Mao, from upper left corner margin with light printed "1" number in yellow at top left;
- 8f Mao and Poem, with imprint in sheet margin at left along with imprinted date;
- 8f Mao among multi-racial crowd, with imprint in left sheet margin along with imprinted date, bottom right pair with short / nibbed perfs;
- 8f Mao with Red Guards, block with no margins;
- 8f Mao with left hand raised in greeting, with sheet margin at foot;
- 8f Mao and Lin Piao, from lower right corner margin with sheet number, faint wrinkle in right sheet margin;
- 8f Mao leaning on rail, upper right corner margin with sheet number;
- 8f Mao conferring with Lin Piao, upper right corner margin.

A beautiful set, seldom encountered larger than in blocks of four, fresh and VF NH (Yang W12-W19; Gibbons 2354-2358, 2367-2369) **8,520.00**



- 99 ★ 949-956, 1967 4f-10f **Our Great Teacher** A choice mint set of eight sheet margin singles, five are corner margin; 4f lower left corner with sheet number, printed "1" number and imprinted date, 8f Mao and poem with sheet number and printed "2" number. A beautiful set with fresh colours, VF NH (Yang W12-W19; Gibbons 2354-2358, 2367-2369) **1,420.00**



X100



X101

- 100 ★ 949-956, 1967 4f-10f **Our Great Teacher** Complete set of eight, tiny corner perf crease on 8f vertical Mao and Lin Piao, otherwise choice with fresh colours, VF NH (Yang W12-W19; Gibbons 2354-2358, 2367-2369) **1,420.00**
- 101 ★ 949-956, 1967 4f-10f **Our Great Teacher** Complete set of eight, small corner crease on last three values, fresh; F-VF NH (Yang W12-W19; Gibbons 2354-2358, 2367-2369) **1,420.00**



102 ★ 957-959, 1967 8f 25th Anniversary of "Talks on Literature and Art" Matching set of three in folded lower margin blocks of ten, each with sheet margin on three sides.

- 8f block with four line text with sheet number and a printed "1" at lower left;
- 8f block with five line text with lightly printed "3" in left sheet margin, both blocks have customary faint traces of offset on gum side from engraved text;
- 8f Parade of Supporters block shows sheet number and printed "2" at lower left, minor wrinkling on top right stamp and in sheet margin at foot.

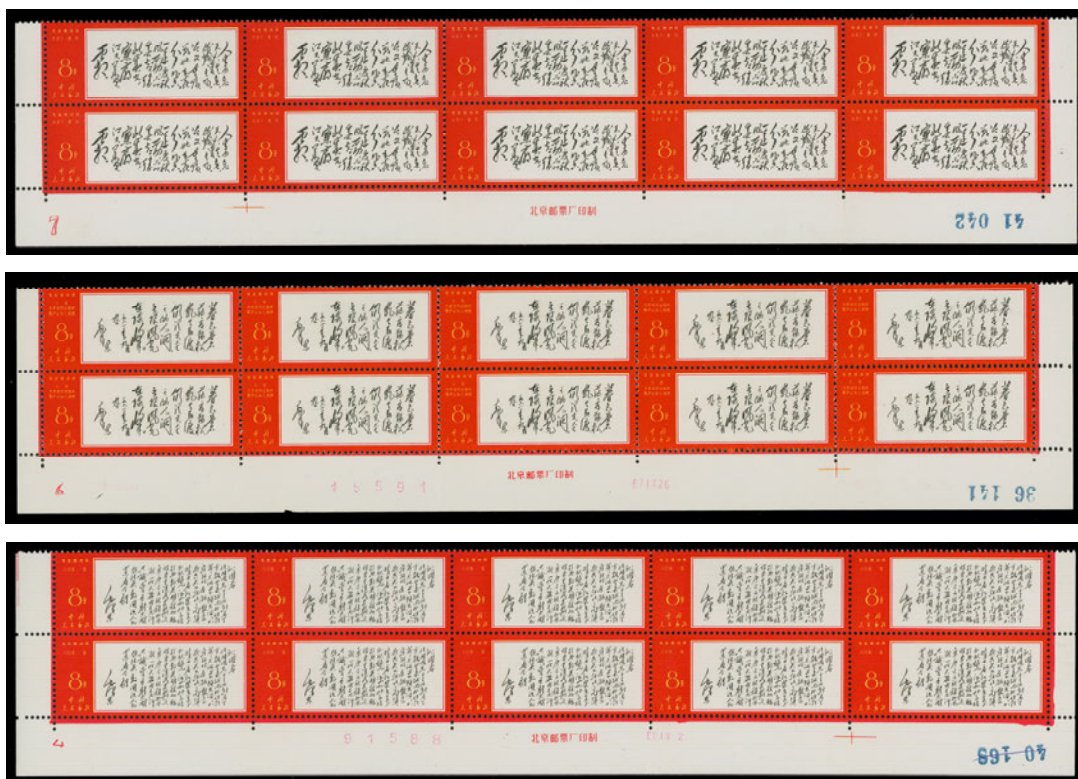
Elusive positional blocks with fresh colours and, VF NH (Yang W20-W22; Gibbons 2359-2361)
9,750.00



- 103 ★ 960-964, 1967 4f-52f Mao Tse-tung Complete set of five in blocks of ten; the 4f, 43f and 52f with lower right corner margin, 35f with margin at right; the odd wrinkle in margins only and 8f block with small tear on one stamp, fresh and F-VF NH (Yang W23-W27; Gibbons 2362-2366) **3,350.00**



104 ★ 965-966, 1967 8f People's Republic of China Anniversary Matching pair of left margin blocks of ten with sheet margin on three sides, folded twice horizontally; 8f Mao Tse-tung as "Sun" with portion of imprinted date at top right and printed "1" number at bottom left, 8f Mao Tse-tung with representatives of Communist countries with imprinted date, control number and printed "2" number in lower sheet margin. Both in pristine condition, VF NH (Yang W37-W38; Gibbons 2370-2371) 2,325.00



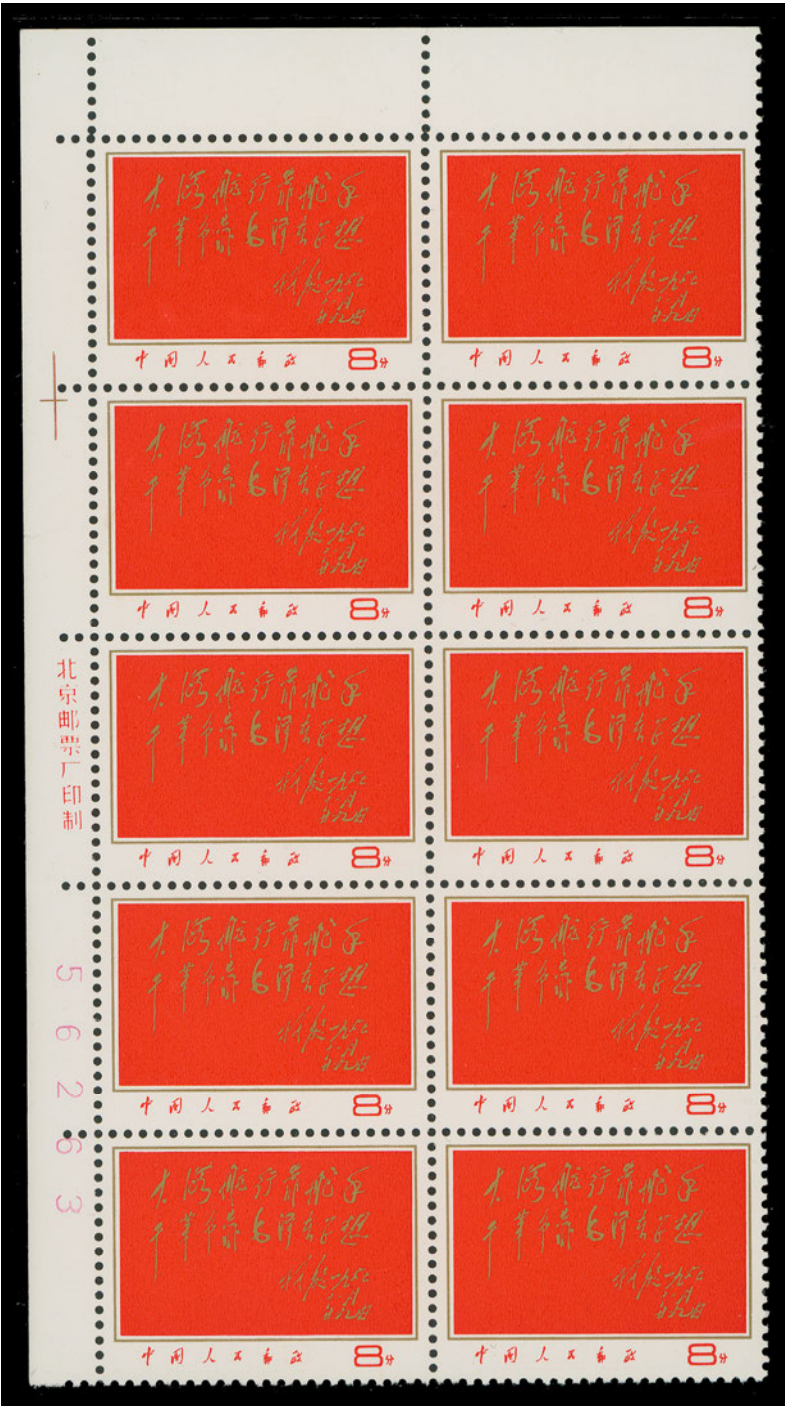
105 ★ 967-980, 1967-1968 4f-10f Poems of Chairman Mao An impressive lot of ten complete sets in marginal blocks or strips consisting of the following, according to Gibbons sequence and design titles:

- 4f "Mount Liupan" top left corner block (2x5) with control number at left;
- 4f "Long March" top left corner block (2x5);
- 8f "Double Ninth" lower sheet margin strip (5x2), tiny wrinkle on one stamp, with imprint, printed "7" number and sheet number in margin;
- 8f "Fairy Cave" lower sheet margin strip (5x2), imprint, printed "6" number, imprinted "67 IX 26" date and sheet number; couple small edge flaws to margin only away from stamps and inscriptions;
- 8f "Huishang" right sheet margin strip (2x5);
- 8f "Yellow Crane Pavilion" right sheet margin strip (2x5) with sheet number at foot;
- 8f "Beidahe" right sheet margin strip (2x5);
- 8f "Swimming" right sheet margin strip (2x5), upper left stamp with small perf flaw from irregular sheet margin at top left;
- 8f "Loushanguan Pass" lower sheet margin strip (5x2) with imprint, printed "5" number, imprinted "68 V 14" date and control number;
- 8f "Snow" lower sheet margin strip (5x2) with imprint, printed "4" number, imprinted "68 IV 2" date, control number and sheet number;
- 10f "Capture of Nanjing" top right corner block (2x3) and lower left margin strip of four, latter with printed "13" number and sheet number;
- 10f "Map writing Poems" top of sheet irregular block of ten, some minor perf separation;
- 10f "Changsha" strip of ten (5x2), diagonal crease through both stamps from second column, sheet margin at both ends; imprinted "67 XI 16" date at right;
- 10f "Reply of Guo Moro" top right corner block (2x3) with sheet number and lower left margin strip of four with printed "2" number crossed out and with "3" in place.

A most attractive set of multiples; as expected on these large strips most are folded, nevertheless all have fresh colours on bright white paper and full "white" original gum, VF NH (Yang W39-W52; Gibbons 2372-2385)

35,500.00





106 ★ 981, 1967 8f Epigram on Mao Corner block of ten with control number and imprint; folded between third and forth rows and tiny marginal tear at left of second row, stamps are fresh and in pristine condition, VF NH (Yang W53; Gibbons 2386) 450.00



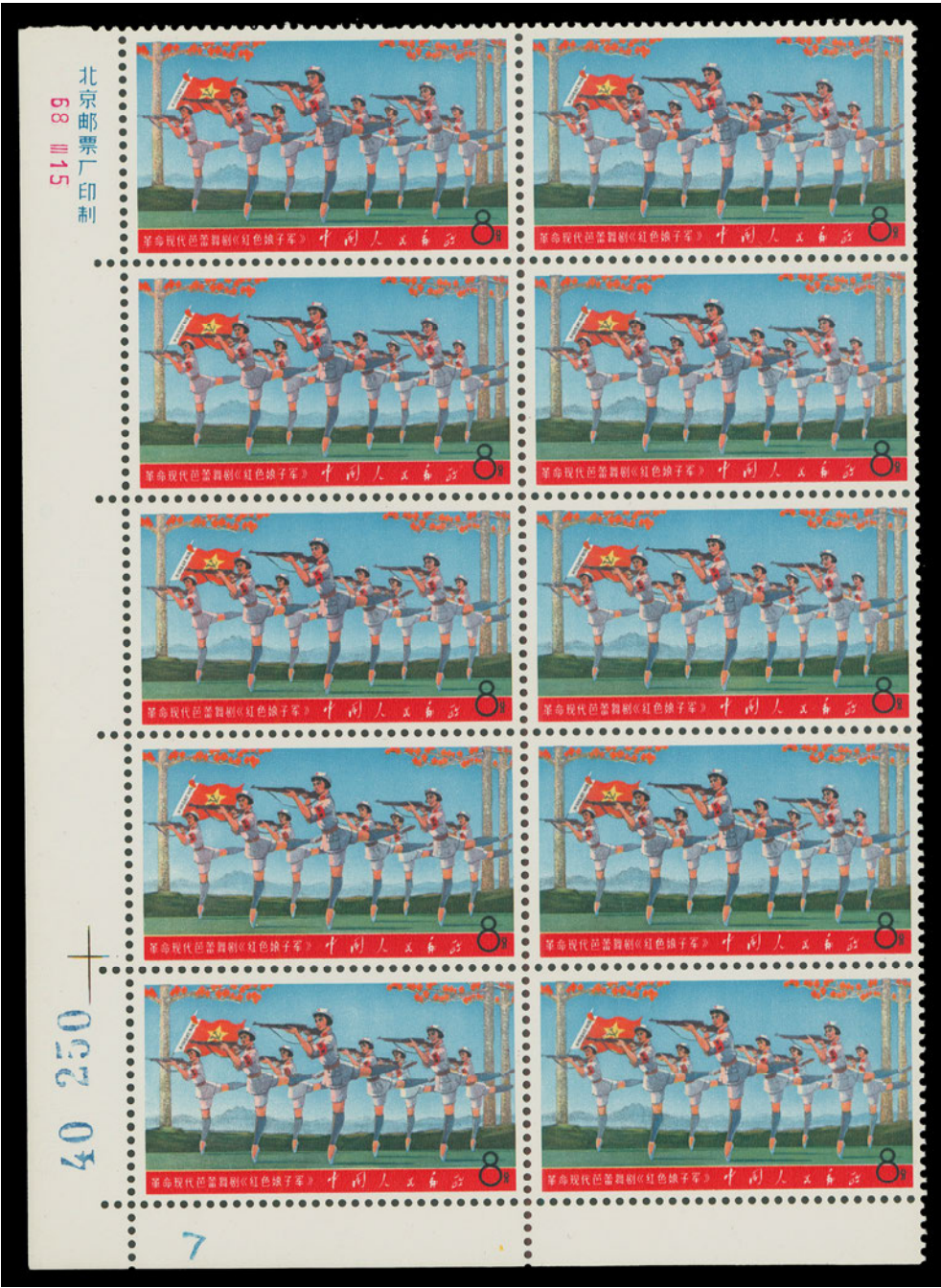
107 ★ 982, 1968 8f Mao Tse-tung and Procession Right margin block of eight, folded twice horizontally, showing colour plates in right margin, control number in top margin and sheet number at lower right; fresh colours, VF NH (Yang W28; Gibbons 2387) 1,040.00



108 ★ 983, 1968 8f "The Red Lantern" Revolutionary Literature and Art Right margin block of eight, folded horizontally between blocks with sheet margin on three sides, sheet number at bottom right; minute wrinkles on lower right stamp, fresh colours and VF NH (Yang W31; Gibbons 2392) 1,040.00



- 109 ★ 984, 1968 8f "Raid on the White Tiger Regiment" Revolutionary Literature and Art Lower margin block of eight, folded vertically between blocks of four, with colour plates at foot and printed "6" at lower left; in pristine fresh condition, VF NH (Yang W33; Gibbons 2388) 1,040.00
- 110 ★ 985, 1968 8f "Shachiapang" Revolutionary Literature and Art Top margin block of eight, folded vertically between blocks of four, with colour plates in top margin and first two digits of control number shown at lower left; a lovely multiple in pristine condition, VF NH (Yang W32 ; Gibbons 2391) 1,040.00
- 111 ★ 986, 1968 8f "On the Docks" Revolutionary Literature and Art Top margin block of eight, folded vertically between blocks of four, with colour plates in top margin and first two digits of control number at lower left. In an excellent state of preservation with fresh colours, VF NH (Yang W30; Gibbons 2390) 1,040.00
- 112 ★ 987, 1968 8f "Taking Bandits' Fort" Revolutionary Literature and Art Top margin block of eight, folded vertically at centre, showing colour plates in top margin and first two digits of the control number at lower left, with pristine fresh colours, VF NH (Yang W29; Gibbons 2389) 1,040.00



113 ★ 988, 1968 8f "Red Detachment of Women" Revolutionary Literature and Art A remarkable block of ten with lower left corner margin, folded horizontally between third and fourth rows, light gum bend and couple shorter perfs hardly detract, showing imprint and imprinted "68 III 15" date at top left, sheet number and printed "7" number at lower left, fresh colours, VF NH (Yang W34; Gibbons 2393) 1,800.00



114 ★ 989, 1968 8f "The White-Haired Girl" Revolutionary Literature and Art An impressive block of ten with upper left corner margin, folded horizontally between third and fourth rows, control number in left margin, in pristine fresh condition, VF NH (Yang W35; Gibbons 2394) 1,300.00



- 115 ★ **990, 1968 8f Mao Tse-tung, Symphony Orchestra** Lower left irregular block of ten, folded twice, with sheet margin and printed "9" number at bottom left, in pristine condition, VF NH (Yang W36; Gibbons 2395) **1,300.00**
- 116 ★ **983-987, 1968 8f Revolutionary Literature and Art** Five different in vertical or horizontal ("Red Lantern") pairs with sheet margin on one side. Includes "Raid Lantern", "Raid on the White Tiger Mountain", "Shachiapang", "On the Docks" with small corner perf flaw on one stamp, and "Taking Bandits' Fort". All with fresh colours, VF NH (Yang W29-W33; Gibbons 2388-2392) *(Illustrated on Page 65)* **1,300.00**
- 117 ★ **991, 1968 8f Mao's Anti-American Declaration** A remarkable block of ten showing imprint at left and right sheet margin, imprinted date at left, folded twice vertically, somewhat tarnished gold on left pair, otherwise choice, VF NH (Yang W54; Gibbons 2396) *(Illustrated on Page 65)* **2,650.00**





118 ★ 996a, 1968 8f Directives of Chairman Mao A spectacular full sheet of forty consisting of eight se-tenant strips of five, folded vertically between third and fourth columns, seventh and eighth columns, and horizontally between second and third rows, showing imprints along with imprinted "68 VI 22" date and control number at top, sheet number at top left. Apart from a small marginal flaw at lower left corner the sheet is in excellent state of preservation with fresh colours on bright white paper with pristine "white" original gum, VF NH; a very small number of sheets of this key issue remain intact. (Yang W55-W59; Gibbons 2397a) *(Illustrated on Page 67)* **42,000.00**



119 ★ 996a, 1968 8f Directives of Chairman Mao A remarkable block of ten consisting of two immaculate unfolded se-tenant strips of five showing imprint and imprinted "68 VI 22" at top right and sheet number at left; inconsequential light pencil notation entirely in the margin at lower left. Exceptionally fresh and desirable in such superior condition with full original gum, VF NH (Yang W55-W59; Gibbons 2397a) **10,500.00**



120 ★ 997, 1968 8f Inscriptions by Lin Biao Folded strip of ten with imprint in left and right side margins, showing large portion of imprinted date at lower left, post office fresh, VF NH (Yang W60; Gibbons 2402) **375.00**

33 009

郵票編號

0 9 2 0 1



北京郵票丁印刷



121 ★ 998, 1968 8f Chairman Mao Goes to Anyuan An impressive imprint block of ten with sheet number at left and portion of imprinted date at bottom left, folded twice vertically, in excellent state of preservation with pristine original gum, VF NH (Yang W61; Gibbons 2403) **1,800.00**



122 ★ 999, 1968 8f Directive of Chairman Mao Folded strip of ten with sheet margin at left and right sides, in pristine condition, VF NH (Yang W62; Gibbons 2405) **2,250.00**





- 123 ★ **Balance of Collection** A Large and valuable assortment of mint singles and multiples from late 1950s to 1967 Our Great Teacher issue, noting many choice blocks, better singles & sets, imprints and other marginal inscriptions. Condition varies from faulty to choice mint NH stamps; needs close examination. Scott 2017 cat. over \$21,000 for basic listed stamps. (Illustrated on Page 68) Est. 7,500.00+



- 124 ☒ **1957-1962 First Day Covers** Nice lot containing 64 different sets on FDC issued November 1957 to June 1962; better items include 1959 20f Mao Proclaiming Republic, 1960-1961 Chrysanthemum set of 18 on six covers, 1961 Statuettes set of 8 on three covers, 1961 Rebirth of the Tibetan People set, 1962 Support of Cuba set, etc. A few with edge faults, most are clean and all are cacheted and unaddressed, Very Fine; also a group of 23 airmail envelopes (mixed condition) from the China Philatelic Company addressed to Max Goldman during 1961 to 1963 and showing a large range of frankings. Est. 500.00+

This image shows a single sheet of white paper with horizontal ruling lines. The lines are evenly spaced and run across the width of the page. There are no margins, text, or other markings on the paper.

THE PLACING OF A BID SHALL CONSTITUTE ACCEPTANCE OF THE CONDITIONS OF SALE

BIDDING

1. The auction is conducted in Canadian dollars. All bids are per lot, as numbered in the catalogue. Eastern Auctions Ltd. reserves the right to withdraw any lot prior to sale, to divide a lot or to group two or more.
2. The highest bidder shall prevail at one advance over the next highest bid. Should a dispute arise between bidders, the decision of the auctioneer as to the successful bidder or the re-offering or resale of the lot in dispute shall rest entirely in the judgment of the auctioneer. **On all lots sold a commission of 15% on the hammer price will be payable by the buyer.** The auctioneer shall regulate the bidding and reserves the right to refuse any bid believed by him not to be made in good faith.

PAYMENT FOR PURCHASES

3. U.S. funds are acceptable only at the equivalent amount shown on the invoice. Visa, MasterCard and Paypal are accepted at a charge equal to 3.5% of the hammer amount. Please include the information on your bid sheet. We also accept cheques at no extra cost.
4. Payment for lots, including those on which opinions are desired under Condition of Sale 8, shall be made as follows:

A successful mail bidder will be notified of lots purchased and must remit before the lots are sent. A person known to us, or who furnishes satisfactory references, may at our option have purchases forwarded for immediate payment. Delivery will be to the address on the bid sheet. Proof by receipt of sending at the advised address shall constitute delivery. Postage and insurance are payable by the buyer.
5. Title shall not pass to the buyer until Eastern Auctions Ltd has received full payment.
6. Buyers agree to pay for lots as specified above and no credit is extended, a late payment charge of 2% per month is added to overdue payments, minimum \$5.00.

QUALITY AND AUTHENTICITY

7. Each lot is sold as genuine and correctly described based on individual description as modified by any specific notations in this catalogue including (but not restricted to) “Key to Cataloguing”.
 - (a) **QUALITY.** Any lot, description of which is incorrect, is returnable within forty-five days from closing date of auction. If the opinion of a mutually acceptable authority is desired, this period will be extended as noted in Condition 8. All disputed lots must be returned intact in the condition received. Photographed lots are not returnable on account of centering or perforations. Lots containing more than twenty stamps, described “as is”, or described as having faults are not returnable for any reason. Bidders who have had an opportunity to examine the lots prior to the sale may not return the lots.
 - (b) **AUTHENTICITY.** Any lot, which is declared other than genuine by a mutually acceptable authority is returnable, provided the lot is received within a period of four weeks from the date of the auction. Proof that a “mutually acceptable authority” declines to express an opinion is not normally grounds for the return of a lot.
 - (c) Returns must be made by registered mail.
 - (d) Lots marked or encapsulated by an expert committee are not returnable for any reason.
 - (e) Lots accompanied by an existing certificate are not returnable.

EXTENSION OF TIME

8. When an opinion from an acceptable authority is necessary the buyer must request an extension from Eastern Auctions Ltd. prior to the auction. The buyer must pay for the lot in full (a refund will be issued in the event of an unfavourable opinion). Eastern Auctions Ltd. will then submit the lot on the buyer’s behalf to one of the following:
 - Vincent Greene Foundation (Canada and BNA)
 - Philatelic Foundation (USA)
 - BPA or RPSL (British Commonwealth)
 - Sergio Sismondo (World except USA)

EXPENSES OF CERTIFICATION

9. Expenses shall be borne by the buyer except where the lot is other than as described and is returned within the conditions set forth above. Our responsibility is expressly limited to:
- (a) The actual cost of the opinion if up to \$30.00 or less, or
 - (b) The cost of the opinion up to 5% of the sale price but not exceeding a maximum of \$100.00.
 - (c) We are not responsible for expenses on the return of any lot.

SALES TAXES

10. Canadian residents will be charged GST or HST as appropriate for their mailing address. Foreign residents are liable for GST only on the buyer's premium.

This firm is a subscriber to the ASDA Code of Ethics for Auction firms.

KEY TO CATALOGUING

SYMBOLS & MAJOR ABBREVIATIONS

★	Mint	⊙	Used	E	Essay
☒	Cover	(/)	Incomplete Set	F	Forgery
(-)	Complete Set	R	Reprint	P	Proof
◆	Graded Stamp	CDS	Circular Date Stamp	L	Literature

CONDITION

The various grading of stamps are in order; **Extremely Fine; Very Fine; Fine and Very Good.** In the case of sets, large blocks, sheets, etc., the condition quoted represents the average and quality above and below this standard can be expected. Minor perf separation can be expected on larger multiples.

Mixed condition: in large lots, a range of condition can be expected, from small faults to Very Fine.

GUM

NH	Never Hinged – with full original gum in Post Office state and unmounted.
LH	Lightly Hinged – with full original gum showing some evidence of a previous hinge.
OG	Original gum – showing some evidence of a previous hinge, a portion of which may still be present.
Part OG	Part original gum.
Unused	Unused without original gum, or regummed.
Ungummed	Without gum as issued.

A NOTE ON HINGING

Bidders are reminded that, in accordance with industry standards, hinging is not described with respect to used stamps or stamps and proofs that were printed without gum. Hinging on these items is irrelevant to their condition and value. If hinging is important to you in such cases please contact us before bidding and request further information. **We will not accept the return of used stamps or ungummed items due to hinging.**

Hinging on mint stamps is always disclosed, however, never hinged status should not be expected unless specifically stated “never hinged” or “NH”.

ESTIMATED VALUES

If an estimated cash value is given, it is shown in the description and always indicated by the abbreviation “Est.”. It is used where the lot is large or where the actual value has little relation to the catalogue price. **It represents the auctioneer’s appraisal of the true CASH value of a lot and the figure is invariably close to the actual realization.** It is useless for mail bidders to list any bids that are only a low proportion of such estimates.

CATALOGUES AND HANDBOOKS USED IN LISTING

- Scott 2018 Catalogue (Volume 2A; C-CUR)
- Stanley Gibbons China (11th Edition; 2015)
- Scott/Yang Catalogue Correlation PRC Liberation Areas & United, R. Weil, M. Rogers, 1999

BIDDING INCREMENTS

The auctioneer may regulate the bidding at his discretion. However, to assist absentee bidders in establishing their maximum bid for each lot, the increments shown below will be used in most cases. We recommend that written bids conform to these increments (those which do not will be reduced to the previous level).

BIDDING IS CONDUCTED IN THE FOLLOWING INCREMENTS:

<i>\$10 - \$50.....</i>	<i>\$2.00</i>	<i>\$800 - \$1,500.....</i>	<i>\$50.00</i>	<i>\$15,000 - \$30,000.....</i>	<i>\$1,000.00</i>
<i>\$55 - \$130.....</i>	<i>\$5.00</i>	<i>\$1,600 - \$3,000.....</i>	<i>\$100.00</i>	<i>\$30,000 - \$75,000....</i>	<i>\$2,500.00</i>
<i>\$140 - \$300.....</i>	<i>\$10.00</i>	<i>\$3,250 - \$7,500.....</i>	<i>\$250.00</i>	<i>\$75,000 - OVER.....</i>	<i>\$5,000.00</i>
<i>\$325 - \$750.....</i>	<i>\$25.00</i>	<i>\$8,000 - \$15,000.....</i>	<i>\$500.00</i>		

TELEPHONE BIDS

Bids may be placed during office hours Monday to Friday from 8:00 AM to 5:00 PM Atlantic Standard Time by dialing 1 (506) 548-8986 or toll free in North America 1 (800) 667-8267. Bids may also be placed during the viewing sessions only, by calling the hotel directly at 1 (902) 423-6331 and asking for “Eastern Auctions”.
Please note all telephone bids must be confirmed by mail, e-mail or fax.

FAXING OR E-MAILING YOUR BIDS

You can fax your bids 1 (506) 546-6627, or toll free in North America 1 (888) 867-8267.
E-mail address: ***easternauctions@nb.aibn.com***

BIDDING BY MAIL

If you wish to mail your bid sheet please allow at least two weeks for delivery. We often receive mail bids after the auction closing. These bids are unfortunately nullified. Bidders are urged to phone in their bids and then mail in their confirmation.

WEB SITE

You can view this auction on our Web Site at ***www.easternauctions.com***. For your convenience, we have pictured almost every lot to facilitate your bidding. This will nicely compliment the catalogue due to constraints presented by a printed format.

AUCTION AGENTS

We are pleased to recommend the following agents:

Mr. Claude Michaud

P.O Box 31248 • Halifax • Nova Scotia • B3K 5Y1 • Canada
Tel: 1 (902) 443-5912 • Fax: 1 (902) 445-5795
Cell: 1 (902) 456-0950
E-mail: jcm.ph@ns.sympatico.ca

Mr. Nick Martin

Angel House • Station Road • Sutterton • Boston
Lincolnshire • PE20 2JH • UK
Tel: (44) 012 0546 0968
E-mail: nick@loveauctions.co.uk
Web Site: www.loveauctions.co.uk

Mr. Charles Cwiakala

1527 S. Fairview Avenue • Park Ridge • IL • 60068 • USA
Phone or Fax: 1 (847) 823-8747
E-mail: cecwiakala@aol.com

Mr. Frank Mandel

P.O. Box 157 • New York • NY • 10014-0157 • USA
Tel: 1 (212) 675-0819 - Fax: 1 (212) 366-6462

**Amanda Lewis &
Jerry Tucker**

21 Leo Ave • Sussex • New Brunswick • E4E 1Z9 • Canada
Tel: 1 (506) 433-2232
E-mail: arl1964@yahoo.ca

Michael Read
Lancaster Auction Agent

Poachers Retreat • Common Lane • Kings Langley • WD4 9HP
Tel: +44(0)1923 269775 • Mobile: +44(0)7789 441735
E-mail bids: michael.read2@hotmail.co.uk
Web Site: www.lancasterauctionagency.com

Purser Associates

84 Webcower Road #2 • Arlington • MA • 02474-2323 • USA
Tel: 1 (857) 928-5140 • Fax: 1 (781) 777-1023
E-mail: info@pursers.com Web Site: www.pursers.com
Visa, MasterCard & American Express welcomed.

Mr. Trevor Chinery

22 The Pastures • Cottesmore • Rutland • LE15 7DZ • UK
Tel: (44) 012 0533 0026 • Fax: (44) 015 7281 3226
E-mail: trevortrilogy@aol.com
Web Site: www.philatellic-auction-agent.co.uk

TERRASSES DE FONTVIEILLE
PRINCIPALITY OF MONACO

**30 NOV.
02 DEC.
2017**



3 EXHIBITIONS:

- 100 **iconic stamps** and documents
- The philately of **North and South America**
- The 100th anniversary of **the King of Philatelists, Ferrari de La Renotière**

AT THE ESPACE LÉO FERRÉ :

- 80 stands operated by postal administrations and international stamp dealers

<http://www.monacophil.eu>



Gary J. Lyon (Philatelist) Ltd. and **Eastern Auctions Ltd.** would like to announce our attendance at the MonacoPhil show Nov 30 to Dec 2, 2017; we invite you to visit our booth for all your British North America needs. A specialized selection of our stock will be available for your viewing pleasure.

北京邮票厂印制

